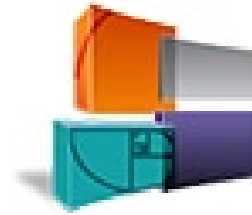




**CFAR**

**S.M.A.R.T.**



**SFAR**

# La gestion de la seguridad y la salud en el trabajo de las y los trabajadores de la salud. Experiencia Francesa.

Dr Ségolène Arzalièr-Daret  
Anesthetist-Intensivist , France

French College and Society of Anesthetists and Intensivists  
Committee for Anesthetists' Occupational Health

June 25th 2020 11.00 a 11.20

# The main numbers of epidemic in France

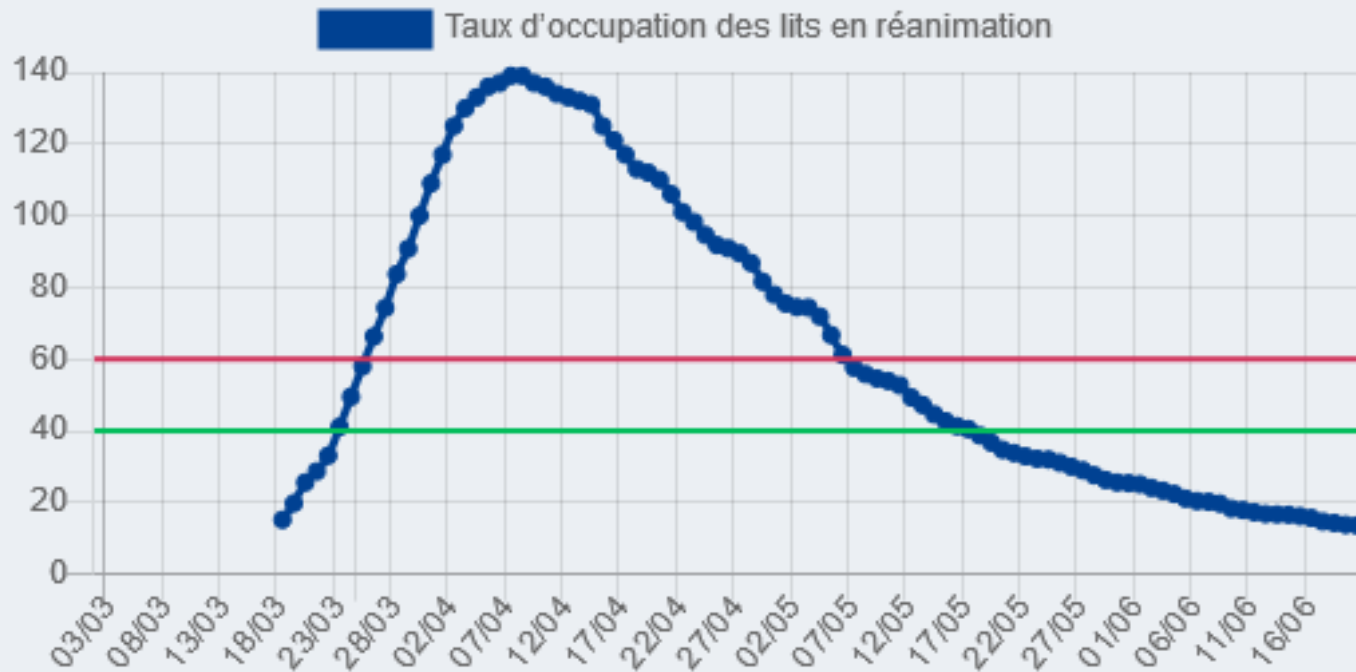
Les chiffres clés en France au 22/06/2020, arrêtés à 14h (mis en ligne en fin de journée)



French population : 67 000 000

# Patients in Intensive Care units COVID-19 - France

**13.6 %** (June 20th)  
Taux d'occupation des lits en réanimation



# PHYSICAL HEALTH



# Work Organization

- Intensive care
- Emergency
- pharmacy, biology, radiology
- Occupationnel Health
- Administration

**STAFF  
MOBILIZED**

**STAFF ON  
REST OR  
ASSIGNED  
TO OTHER  
MISSIONS**

- Pregnant women
- Operating Theater
- Surgeons
- Physiotherapists
- Secretariat
- Sheduled hospitalization

**Anesthesiologists** mobilized in intensive care

**Nurses aid anesthetists** mobilized in intensive care

Recovery rooms transformed in intensive care units

**Surgeons** : - mobile team of prone position in intensive care units,  
- remote monitoring of covid + patients at home (covidom)

Private public partnership (intensive care beds)

# Self Protection in Operating Theater or Intensive Care : good gesture on video



Norsims | Formations procédurales en contexte épidé  
Université de Caen Normandie - UNICAEN - 5/11



- 1 Désinfection des mains à la solution hydro alcoolique (SHA) NorSimS Caen 0:41
- 2 Mise en place de masque FFP2 NorSimS Caen 1:07
- 3 Déshabillage après soins à un patient Covid19 (protection gouttelettes) NorSimS Caen 2:18
- 4 Habillage pour soins à un patient Covid19 (protection gouttelettes) NorSimS Caen 3:04
- ▶ Intubation d'un patient NON infecté en contexte de pandémie Covid19\_Mars... NorSimS Caen 2:49
- 6 Intubation d'un patient Covid19+ mars/avril et pour TOUS PATIENTS à... NorSimS Caen 3:14

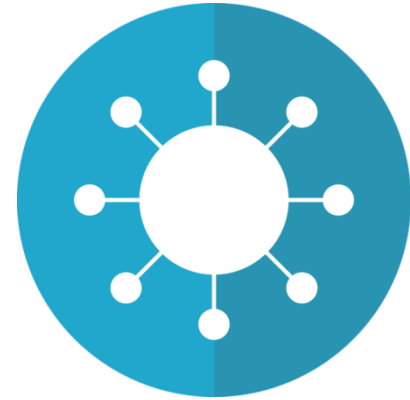
Learning and session of Training in simulation centers  
(Hand washing, donning, doffing, masking, Intubation, extubation)



**NORSIMS**

NORMANDIE SIMULATION SANTÉ

# Management of sick staff during the crisis



- Asymptomatic contact case:
  - No systematic eviction
  - Report and wear a mask 14 days
  - Symptom and temperature monitoring 2x / day
- If symptom:
  - Screening and confinement until results:
  - If PCR negative : masks for 14 days, back to work
  - If PCR positive : confinement adapted according to risk factors and continuity of care

(Until may: shortage of tests)

# National inventory of COVID-19 cases among healthcare professionals

- Contamination rate x 6 than general population (estimate)
- Great investigation in progress on 12 months
  - identify the number of professionals infected
  - identify risk factors for contamination

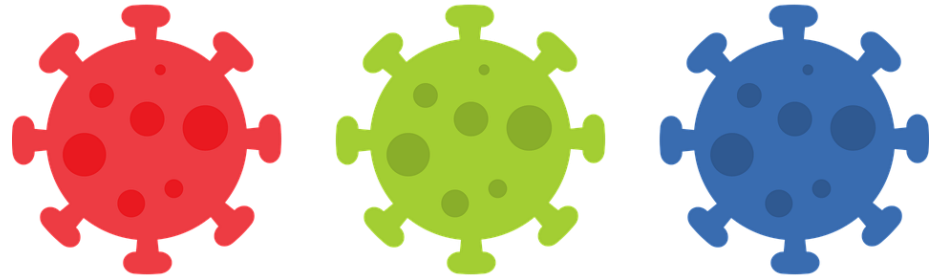




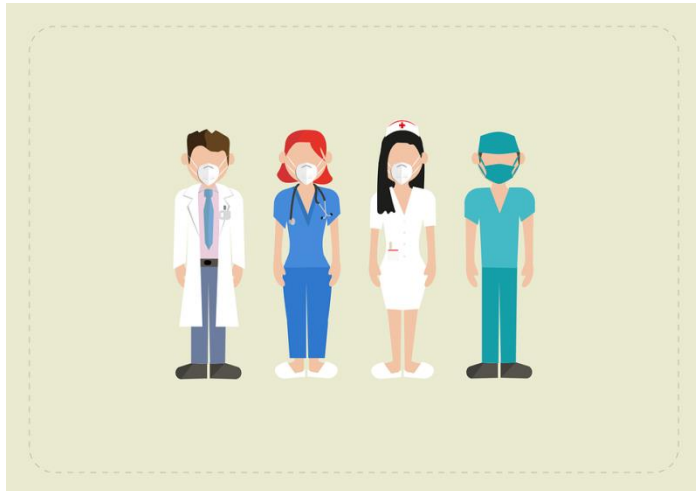
# Intermediate Results

March 1st - June 7th, 1165 hospitals

30675 cases  
of contamination



29% Nurses 24% Caregivers



**16 deaths**

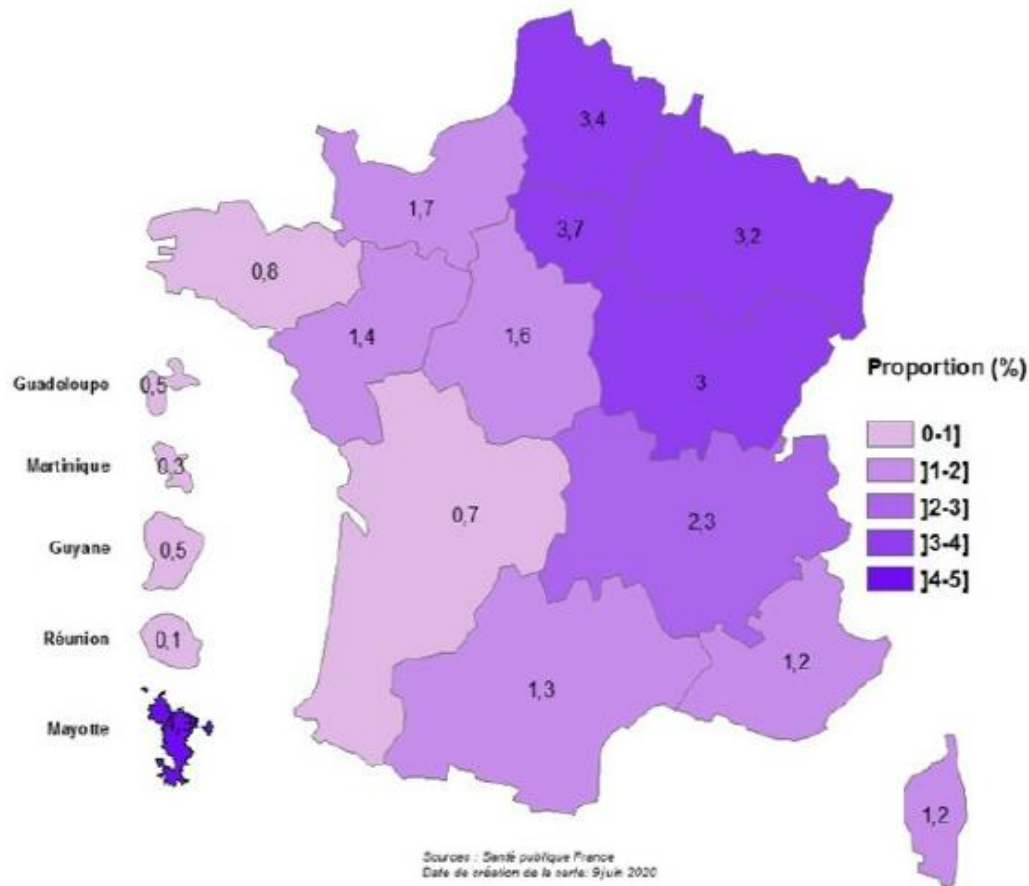
5 physicians  
4 Caregivers

...



Occupational disease?

# Proportion (%) of Health professionals in public hospitals infected by the SARS-CoV-2 from March 1st on all the health professionals in PH.



# MENTAL HEALTH





## FICHE

Réponse rapide dans le cadre du COVID-19 - Souffrance des professionnels du monde de la santé : prévenir, repérer, orienter

Validée par le Collège le 7 mai 2020

## High Authority of Health

# Health professionals Support

- National hotline for caregivers (Ministry of Health)
- National Hotline (Association SPS)
  - 3244 calls in 2 months (from march 23th)

- 34% on night or sunday
- 71% females, 84% employees
- 35% nurses/caregivers

**Anxiety (35%)**  
**Problems of Work organization (12%)**  
**Exhaustion (13%)**



# Observatorio el sufrimiento en el trabajo

## March 27th to May 27th

- For physicians of public hospitals
- 60% of déclarations due to COVID
- Anesthesiology and intensive care, palliative care, surgery
- Causes of suffering
  - disruption of work organization(100%)
  - emotional overload (89%)
  - insufficiency of material means to exercise (67%)
  - insufficient personal protective equipment (67%).
- Conséquences:
  - sleeping troubles (89%)
  - mental disorders or post-traumatic stress disorder (56%)
  - anxiety and depressive disorders (56%).



# In conclusion

- The health crisis occurred over a social crisis in the public hospital (2019/2020)
- Some physicians held because they found meaning in their work in a major health crisis despite the lack of resources but a lot report exhaustion
- We have to be prepare for the post-crisis (a lot of care to do with exhausted staff)
- We expect a strong commitment from the government on working conditions at the hospital (Ségur de la santé)

**Recognition at work**

Thank You