



AUGMENTING ICU CAPACITY

U.S.A Experience

JAVIER PEREZ-FERNANDEZ, MD, FCCM, FCCP

DIRECTOR CRITICAL CARE SERVICES, BAPTIST HOSPITAL OF MIAMI

CHAIR CRITICAL CARE ENTERPRISE, BAPTIST HEALTH SOUTH FLORIDA

CEO SOUTH FLORIDA CRITICAL CARE SERVICES, LLC

ASSOCIATE PROFESSOR OF MEDICINE, FLORIDA INTERNATIONAL UNIVERSITY,
HERBERT WERTHEIM COLLEGE OF MEDICINE

AUGMENTING CAPACITY

* STAFF

* STUFF

* SPACE

* STRUCTURE

MEDICAL SERVICE

```
graph TD; A[What Doctors Are Available?] --- B[Who is doing what?]; B --- C[Advanced Registered Nurses]; C --- D[Emergency Privileges]; D --- E[Training];
```

What Doctors
Are
Available?

Who is doing
what?

Advanced
Registered
Nurses

Emergency
Privileges

Training

CAPACITY
CAPABILITY

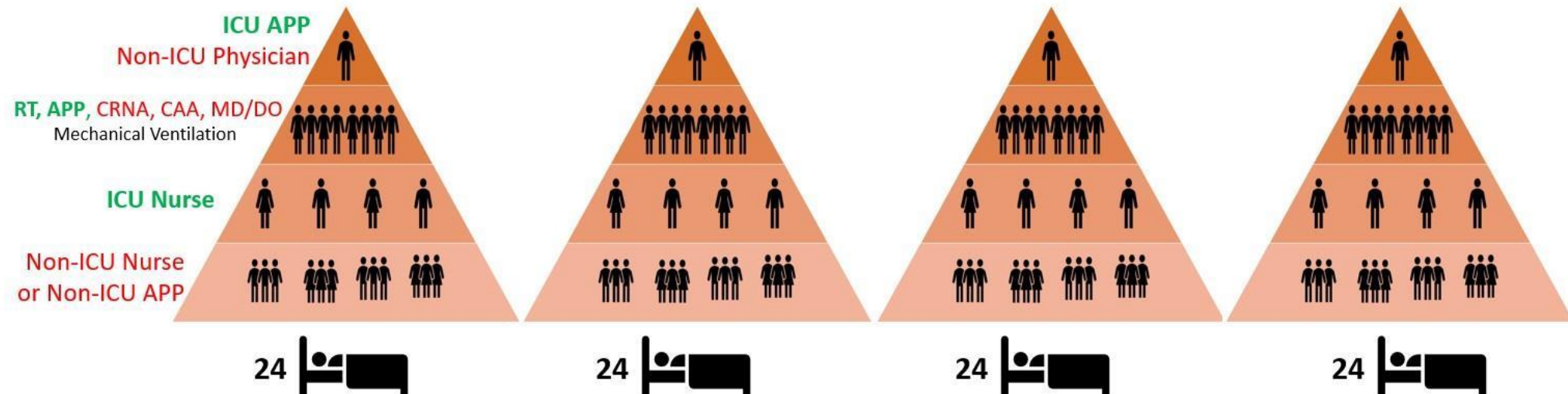


Tiered Staffing Strategy for Pandemic

Requiring Significant Mechanical Ventilation



Trained or Experienced Critical Care Physician



NURSING AND OTHER PERSONNEL

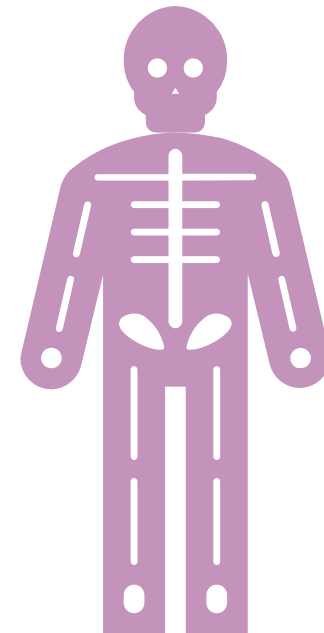
1 ICU Nurse

4 Ward Nurses

Respiratory Therapies

OR assistant personnel

Outpatient assistant personnel



EQUIPOS Y SUMINISTROS



Ventilators

Oxygen

Sedation

Research drugs

Common medications

Ventilators

Standard
Ventilators

* Transport and
Portable ventilators
(includes Strategic
National Stockpile)

* Anesthesia
Machines

* Converted BiPAP

* Additional
Solutions

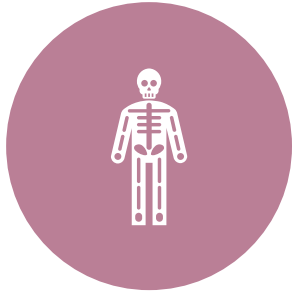
Medications

* COMMON

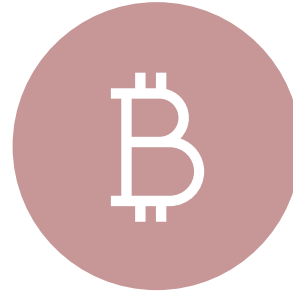
- Restrictions
- Protocols
- Privilege limitations

* RESEARCH

- Task Force
- Protocols
- Ethics Committee



* Limit heroic treatments
(ECMO, NO, etc.)



* Quantify and Distribute



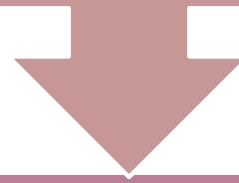
* Plan.



Ethics Committee

Other Elements

* Where is the Expansion going?



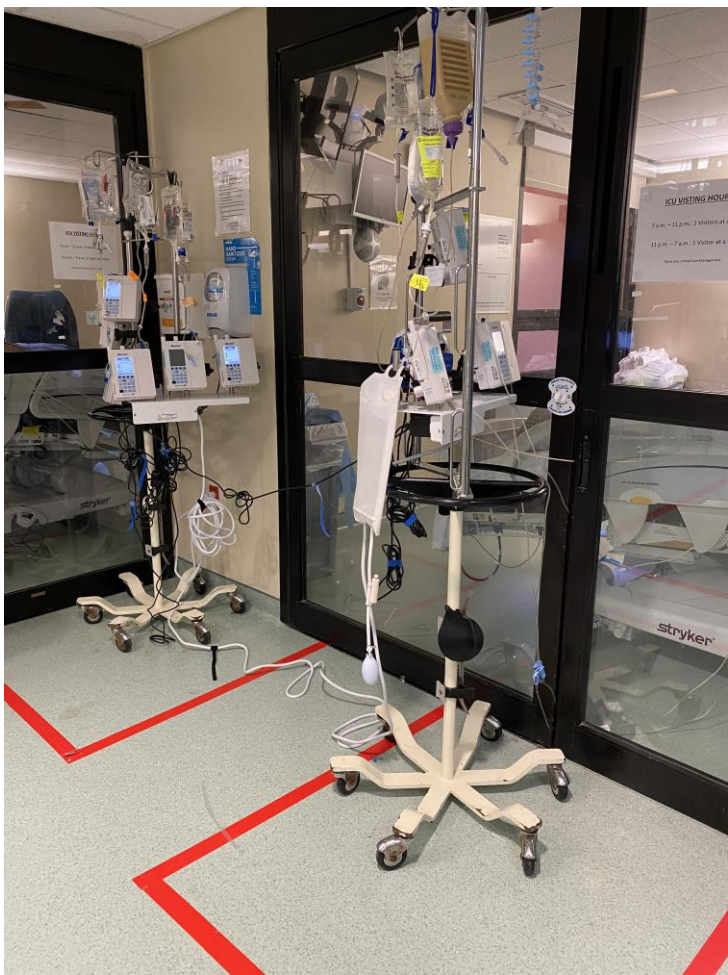
* Design and Plan

Contain

Supplies

Protect

SPACE





* Enough to transfer a patient from bed to bed



* Enough to allow Resuscitation Efforts

* Enough to allow for Ambu usage

Enough for procedures

Adequate
Space?

Structure

Incident Command Center

Communications

Ethics Committee

Command Structure

External Help



DISTRIBUTIVE
JUSTICE?
M-SOFA?

Triage and Allocation of ICU resources during a catastrophe

TRIAGE AND THE ALLOCATION OF ICU RESOURCES DURING CATASTROPHIC EVENTS

**Recommendations of the
Task Force of the System-Wide Adult Critical Care Committee (SWACCC)
Baptist Health South Florida
12/10/2009
Reviewed: July 2014**

Contributing Members of the SWACCC Task Force

Louis	Raul d
Barba	Debbie
Jame:	Connie
Renal	Robert
Lynne	Mike N
Jean ,	Ruben
Javier Perez-Fernandez MD	Doroth

AUGMENTING CRITICAL CARE CAPACITY DURING DISASTERS



*Plan everything ahead...
Prepare yourself for the
worse and hope for the best!*
